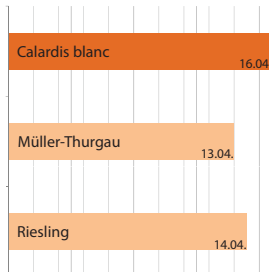
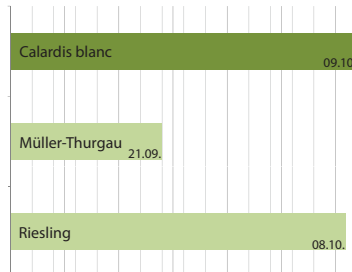


## Wine growing characteristics

Burst of buds  
(mean for 5 years)



Time of harvest  
(mean for 5 years)



**Growth:** medium vigor, upright growth

**Grape:** loose cluster architecture; about 120 g per cluster

**Ripening:** like Riesling



The wine has a rich finesse with a delicate, spicy bouquet; it is characterized by a lively acidity.

### Information from JKI: Grape variety 'Calardis blanc'

**As download you will find the information sheet:**

<https://www.julius-kuehn.de/zr/flyer/>

**Publisher:**

Julius Kühn Institute - Federal Research Centre for Cultivated Plants  
Institute for Grapevine Breeding, Geilweilerhof  
76833 Siebeldingen, Germany, Tel.: +49 6345/41-114  
zr@julius-kuehn.de

**Text:**

Silke Hüther, JKI

**Editorial and Layout:**

Gerlinde Nachtigall, Anja Wolck, JKI

**Pictures:** JKI

The Julius Kühn Institute is an institution subordinated to the German Federal Ministry of Food and Agriculture (BMEL).

[www.julius-kuehn.de](http://www.julius-kuehn.de)

DOI 10.5073/jki.2018.003  
March 2018

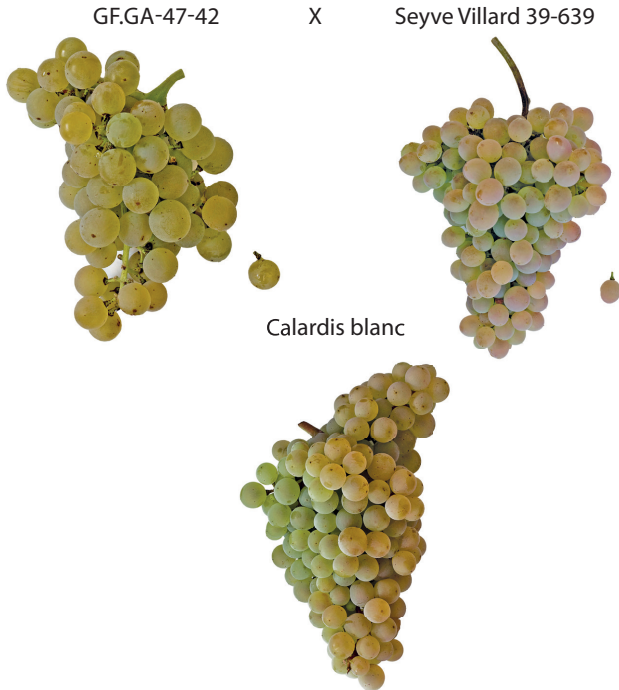
English

# Calardis blanc



**Fruity wine style  
with decent bouquet**

## Ancestry



## History

- 1993:** Crossing
- 2000 ff:** Selection and testing in several breeding stages
- 2013:** Application for variety protection
- 2015:** Application for variety list
- 2018:** Grant of plant variety protection

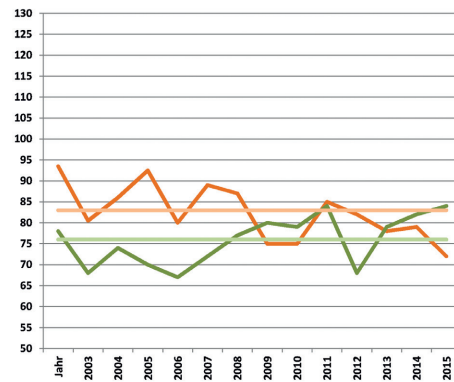
## The parents

GF.GA-47-42 (Bacchus x Seyval): crossed at Institute for Grapevine Breeding Geilweilerhof in the year 1964.

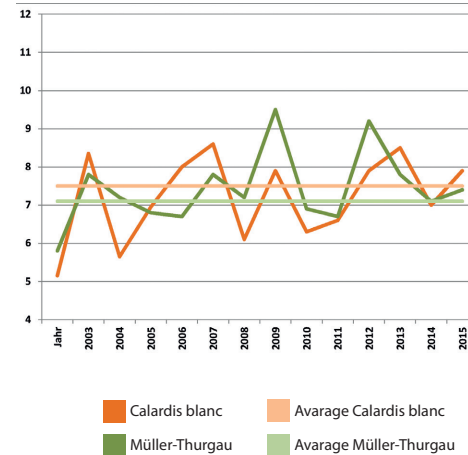
Seyve Villard 39-639: It is a carrier of meanwhile characterized resistance loci. However, it's ancestry is unknown.

## Performance data

### Sugar content



### Acidity in g/l



## Description

### Resistance

- Powdery mildew:** medium-high
- Downy mildew:** high
- Botrytis:** medium-high
- Black Rot:** high
- Reduction of fungicides:** up to 80%